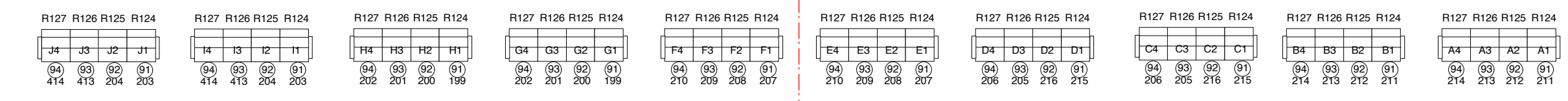


Deck USR
c: 391-402, ETC Net 9-10

Deck USL
379-380, ETC Net 7-8



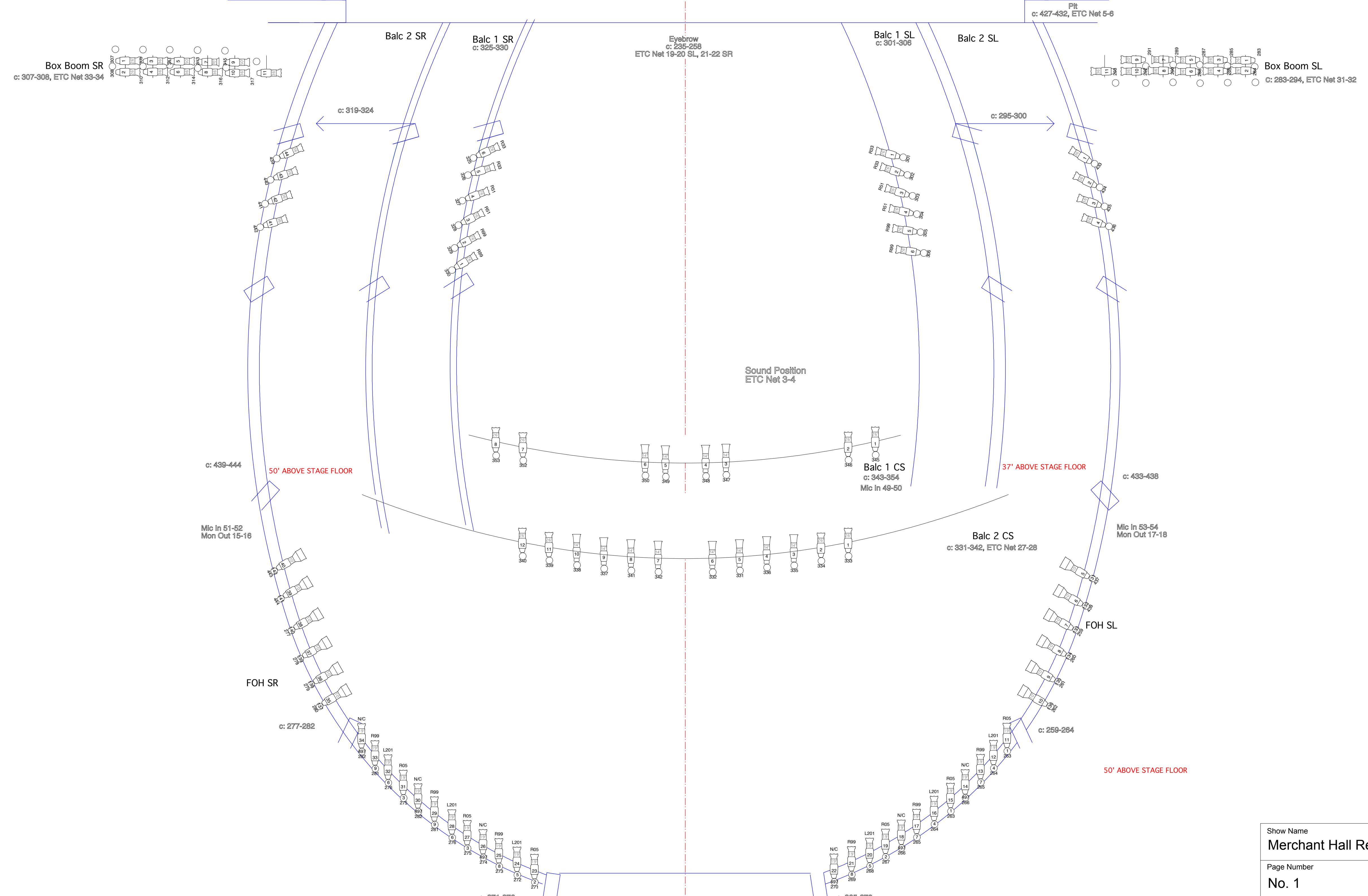
- 75 Black Out Curtain
- 74 Bounce
- 73
- 72
- 71
- 70
- 69 6th Electric
- 68
- 67 SHELL CEILING
- 66 Trans
- 65 Black Out Curtain
- 64 Black Scrim
- 63
- 62 Leg 5
- 61 Border 4
- 60 SHELL LIGHTING
- 59
- 58
- 57
- 56
- 55 5th Electric
- 54
- 53
- 52 SHELL CEILING
- 51
- 50
- 49
- 48
- 47 Leg 4
- 46 Border 3
- 45 SHELL LIGHTING
- 44
- 43
- 42
- 41
- 40
- 39 4th Electric
- 38
- 37 SHELL CEILING
- 36
- 35 Full Stage Red Drop
- 34 Black Out Curtain
- 33
- 32 Leg 3
- 31 Border 2
- 30 SHELL LIGHTING
- 29
- 28
- 27
- 26
- 25
- 24 3rd Electric
- 23
- 22 SHELL CEILING
- 21
- 20
- 19
- 18
- 17 Leg 2
- 16 Border 1
- 15 SHELL LIGHTING
- 14
- 13
- 12
- 11
- 10 RP SCREEN
- 9 2nd Electric
- 8
- 7 SHELL CEILING
- 6
- 5 1st Electric
- 4
- 3
- 2 Leg 1
- 1 Black Out Curtain Act Curtain

Grid DSR
c: 217-222, ETC Net 17-18
Mid SF
c: 415-426, ETC Net 13-14
Deck DSR
c: 367-376, ETC Net 3-4

Grid
ETC Net 15-16
Mid DSL
403-414, ETC Net 11-12
Deck DSL
355-366, ETC Net 1-2

Box Boom SR
c: 307-308, ETC Net 33-34

Box Boom SL
c: 283-294, ETC Net 31-32



Instruments

- Source 4 4deg
- Source 4 25deg
- SA PAR WFL
- Ear Cnc Coil
- Ear Cnc Coil
- Ear Cnc Coil
- Source 4 10deg
- Source 4 19deg
- Source 4 14 Deg
- Source 4 20deg
- Source 4 70 deg

Legend

- Color
- Channel

Show Name Merchant Hall Repertory Plot		
Page Number No. 1	Drawn By Sean Orway	Date 09/12/2012
CAD File Name Merchant Rep Plot v2010.vwx		Scale 1/4" = 1'0"